

Quick Disconnect Coupling, Model : QDC



the right connection

Ref. No : H03297, Release Jan 2006 (Dimensions in mm)

Description

Quick disconnect couplings are designed for applications where fast connection and disconnection of hydraulic lines is a need of the system.

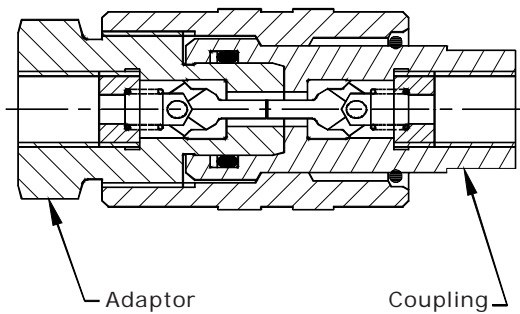
These coupling when connected offer unrestricted flow passage.

They are designed for reliable and safe operations by avoiding premature flow before the coupling is fully closed.



Section

(Self sealing Coupling, Self sealing Adaptor, Illustrated)



Hydraulic Symbol	Coupling Type
	Through type Adaptor AT
	Through type Coupling CT
	Self sealing Adaptor AS
	Through type Coupling CT
	Through type Adaptor AT
	Self sealing Coupling CS
	Self sealing Adaptor AS
	Self sealing Coupling CS

Unit Dimensions

End connections (Female)

BSP - G
Metric - M

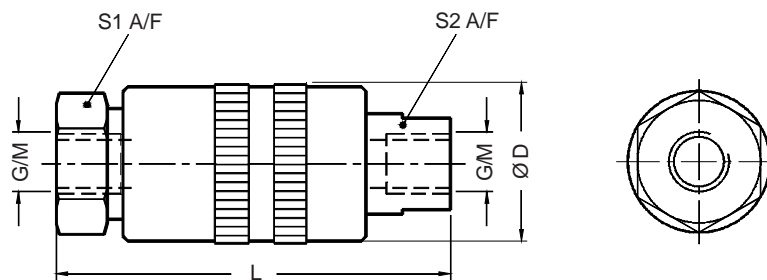
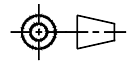


Table 1

Pressure (bar)	G	M	S1	S2	ØD	L
800	G 1/4	M14x1.5	27	19	35	86
800	G 3/8	M18x1.5	32	22	37	88
600	G 1/2	M22x1.5	41	30	46	116
500	G 3/4	M26x1.5	50	36	56	130
400	G1	M33x2.0	55	41	62	150

Technical Specifications

- Construction Poppet type.
- Operating pressure Refer table no.1
- Hydraulic medium Mineral oil.
- Viscosity range 10 cSt to 380 cSt.
- Fluid temperature range -20 °C to +80 °C.
- Fluid cleanliness As per ISO code 19/16 or better
- Maximum flow handling capacity

M14 x 1.5	G 1/4
M18 x 1.5	G 3/8 - 30 lpm
M22 x 1.5	G 1/2
M26 x 1.5	G 3/4
M33 x 2.0	G 1

Caution : Pressure on the hydraulic lines must be relieved before they are connected/disconnected.

Ordering Code

QDC 800 G02 AS CS - V 304 P - 2.0

Quick Disconnect Coupling

Design Series
Subject to revision

Pressure Range		
G 1/4	M14x1.5	800
G 3/8	M18x1.5	800
G 1/2	M22x1.5	600
G 3/4	M26x1.5	500
G1	M33x2.0	400

Surface treatment	
Omit	Zinc plated and Yellow chromated
P	Phosphating

Body Material	
Omit	Steel
304	SS 304
316	SS 316

Seal material	
Omit	Nitrile
V	FKM
X	Without O-Ring

End Connections	
G 1/4	G02
G 3/8	G03
G 1/2	G04
G 3/4	G06
G1	G08
M14x1.5	M14
M18x1.5	M18
M22x1.5	M22
M26x1.5	M26
M33x2.0	M33

Coupling Type	
Omit	For Adaptor Only
CS	Self sealing
CT	Through type

Adaptor Type	
Omit	For Coupling Only
AS	Self sealing
AT	Through type